

A Logistics Partner that Connects You to the Future

Corporate Philosophy

Original Purpose and Harmony

- 1.** We will never forget our original purpose of becoming the best in logistics quality nationwide.
- 2.** When working, we will remember our original purpose and embrace the basics.
- 3.** We will value harmony within and outside the company, aim to honor the trust of our customers, and prosper together with them.

Management Policy

Increase the value of the company by achieving continuous growth.

Provide services that satisfy our customers.

Strive to improve the growth and satisfaction of our employees.

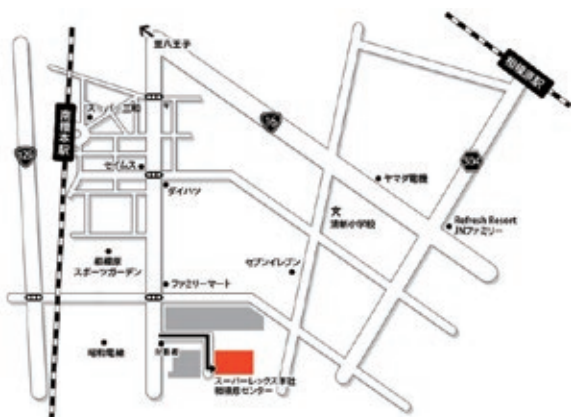
Contribute to society through the growth of the company.

Company Overview

Company Name	SUPEREX Co., Ltd.
Headquarters	252-0216 8-20-52 Seishin, Chuo-ku, Sagamihara City, Kanagawa
Phone Number	(042)774-8759
Business Locations	23 Locations Nationwide
Founded	April 1, 1993
Representative	President and CEO Yuichi Nagura
Capital Stock	245.295 million yen
Annual Turnover	10,874 billion yen (March 2025)
Shareholders	HAMAKYOREX CO., LTD. Itochu Logistics Corporation ZERIA Pharmaceutical Co., Ltd.
Subsidiary	Super Service Co., Ltd.
Main Responsibilities	Distribution Center Business <ul style="list-style-type: none">• Provide 3PL planning and logistics solutions• Manage and operate distribution centers• Logistics consulting and temporary staffing services• Settlement and collection of delivery payments• Real estate leasing
Number of Employees	1,361 (as of March 2025, consolidated)
Quality Control	ISO9001:2015 (Ageo Center)
Personal Information Management	Privacy Mark (Obtained April 2013)

History

- April 1993: Founded with investment from HAMAKYOREX Co., Ltd. and ITOCHU Corporation
- September 1993: Started household goods TC (transport type) operations for major general supermarkets
- October 1993: Began operations as HG (distribution center using hanger cargo) for clothing for a major general supermarkets
Started clothing DC (transport type) operations for major general supermarkets
- May 1994: Obtained license for a first class consigned forwarding business
- February 1999: Started DC operations for prescription and OTC drugs
- September 1999: Started processed foods TC operations for major general supermarkets
- October 2000: Constructed our own center in Aiko-gun, Kanagawa, and started household goods TC and DC operations for a major discount store <company property>
- January 2001: Merged with Coolex and took over the fresh food TC business for major general supermarkets
- April 2003: 10th anniversary of the company's founding
- September 2003: Established a low-temperature complex center for food products for wholesalers and manufacturers
- March 2004: Started household goods TC operations for home improvement retailers
- April 2004: Started DC operations for industrial goods for a major automotive parts manufacturers
- June 2005: Acquired ISO 9001 certification
- December 2006: Constructed our own property in Sugito-machi, Kitakatsushika-gun, Saitama, and started DC operations (temperature zone change and distribution processing) for fresh and frozen foods for major general supermarkets <company property>
- July 2007: Obtained license to sell pharmaceuticals
- August 2008: Started factory front logistics and DC operations for major industrial machinery manufacturers
- August 2009: Started DC operations for mail-order business for veterinary drugs and medical devices
- October 2012: Obtained license to manufacture pharmaceuticals
- April 2013: 20th anniversary of the company's founding
Obtained Privacy Mark
- May 2013: Obtained licenses to manufacture quasi-drugs and cosmetics
- June 2013: HAMAKYOREX Co., Ltd., ITOCHU Logistics Corporation, and ZERIA Pharmaceutical Co., Ltd. become the three shareholders
- April 2015: Acquired headquarters and warehouse in Chuo-ku, Sagami-hara City, Kanagawa <company property>
- December 2015: Started DC operations for aircraft interior manufacturers
- March 2016: Constructed our own center in Midori-ku, Sagami-hara City, Kanagawa and started TC operations for food products for major drugstores <company property>
- July 2017: Started factory front logistics and DC operations for aircraft interior manufacturers
- August 2017: Started TC business of household goods for major drugstores
- October 2017: Obtained license to manufacture medical equipment
- March 2018: Established a subsidiary (Super Service Co., Ltd.) and started TC business of food products for major convenience stores <company property>
- November 2019: Started DC operations for frozen food for major convenience stores
- September 2020: Acquired warehouse in Ora-gun, Gunma <company property>
- March 2023: Established a new center in Nagareyama City, Chiba, and started TC operations for major supermarket chains.
- April 2023: 30th anniversary of the company's founding
- May 2023: Established a new center in Itakura Town, Ora District, Gunma, and started DC operations for over-the-counter (OTC) pharmaceuticals.
- September 2023: Established a new center in Saito City, Saitama, and started DC and TC operations for frozen foods for major convenience store chains.
- February 2024: A hazardous materials warehouse was newly established on the premises of the Kita-Kantō Itakura Center.
Established a new center in Midori Ward, Chiba City, Chiba, and started TC operations for major supermarket chains.
- April 2024: Established a new center in Tainai City, Niigata, and started pre-factory logistics DC operations for aircraft interior components.
- February 2025: Established a new center in Ogōri City, Fukuoka, and started DC operations for both prescription and over-the-counter (OTC) pharmaceuticals.
- March 2025: Constructed an in-house center in Meiwa Town, Ora District, Gunma, and started DC and manufacturing operations for prescription pharmaceuticals, over-the-counter (OTC) pharmaceuticals, and veterinary pharmaceuticals.
- April 2025: Established a new center in Murakami City, Niigata, and started pre-factory logistics DC operations for aircraft interior components.



SUPEREX Co., Ltd. Headquarters

252-0216

8-20-52 Seishin, Chuo-Ku, Sagami-hara City, Kanagawa

TEL : 042-774-8759

Sapporo Center No. 1 Medical Products

003-0006

2-3-25 Higashi-Sapporo 6-jo Shiroishi-ku, Sapporo City, Hokkaido

TEL : 011-821-2277

Sendai Center Food Products

983-0013

5-3-28 Nakano, Miyagino-ku, Sendai City, Miyagi

TEL : 022-254-6422

Niigata Murakami Center Industrial Goods

958-0822

341-1 Kamitsubone, Tsubone, Murakami City, Niigata
JAMCO Aircraft Interiors Co., Ltd.

TEL : 042-774-8759* Phone number connects to headquarters.

Niigata Nakajo Center Industrial Goods

959-2600

9-125 Shimizu, Tainai City, Niigata JAMCO logistics facility
TEL : 042-774-8759* Phone number connects to headquarters.

Kitakanto Itakura Center Medical Products

374-0133

2622-1 (A-2), Nagara, Iwata, Itakura-machi, Ora-gun, Gunma
TEL : 0276-91-4370

Tatebayashi Center Medical Products

374-0133

2580-1 Iwata, Itakura-machi, Ora-gun, Gunma
TEL : 0276-82-6631

Meiwa Center Medical Products

370-0704

140-1 Togōda, Meiwa Town, Ōra District, Gunma
TEL : 0276-50-1648

Tsukuba Center Medical Products

300-1281

2200-5 Katsura-cho, Ushiku City, Ibaraki
TEL : 029-878-6655

Ageo Center Medical Products

362-0051

449-12 Jitokata, Ageo City, Saitama

TEL : 048-783-0606

Kawaguchi Center Medical Products

332-0004

5-9-28 Ryoke, Kawaguchi City, Saitama

TEL : 048-227-1657

Nagareyama Center Food Products

270-0118

158-1 Morino Logistics Park 2-chome, Nagareyama City, Chiba
TEL : 04-7197-7188

Kasukabe Center Food Products

345-0012

391-9 Fukawa, Sugito-machi, Kitakatsushika-gun, Saitama
TEL : 0480-36-5230

Satte Center Food Products

340-0145

2480-12 Hirasuka, Satte City, Saitama
TEL : 0480-48-5250

Chiba Honda Center Food Products

266-0005

2-28-100 Honda, Midori-ku, Chiba City, Chiba
TEL : 0480-36-5238* Phone number connects to Kasukabe Center.

Sagami-hara Center Daily Necessities Clothing and Character Goods Industrial Goods

252-0216

8-20-52 Seishin, Chuo-ku, Sagami-hara City, Kanagawa
TEL : 042-774-8759

Sagami-hara Ogura Center Food Products Industrial Goods

252-0115

1508-4 Ogura, Midori-ku, Sagami-hara City, Kanagawa
TEL : 042-783-5581

Atsugi Center Industrial Goods

Atsugi Center No. 1

243-0303

4026-1 Sakuradai, Nakatsu, Aikawa-machi, Aiko-gun, Kanagawa

Atsugi Center No. 2

243-0303

4036-1 Nakatsu, Aikawa-machi, Aiko-gun, Kanagawa
Land Port Atsugi Aikawa-machi 3F
TEL : 042-774-8759* Phone number connects to headquarters.

Daito Center Medical Products

574-0052

2-30 Shinden Kitamachi, Daito City, Osaka
TEL : 072-806-5107

Hirakata Center Medical Products

573-1132

1-7 Shodaitajika, Hirakata City, Osaka
TEL : 072-836-0620

Kobe Center Daily Necessities Household Goods

651-2228

4-10-4 Mitsugaoka, Nishi-ku, Kobe City, Hyogo
TEL : 078-998-3511

Okayama Hayashima Center Daily Necessities Household Goods

701-0301

808-1 Yao, Hayashima-cho, Tsukuba-gun, Okayama
TEL : 086-292-2330

Okayama Akaiwa Center Daily Necessities Household Goods

709-0717

50-20 Osegi, Akaiwa City, Okayama
TEL : 086-995-3800

Fukuoka Center Medical Products

838-0113

83-11 Mukōura, Yamakuma, Ogōri City, Fukuoka
TEL : 0942-48-5115



Comprehensive Logistics - From pre-factory logistics to EC logistics -

We propose and provide services based on 30 years of experience in a wide range of operations, including pre-factory logistics, TC (transport type), DC (inventory type), personal logistics, and distribution processing.



Household Goods

We are experienced not only in providing TC (transport type) and DC (inventory type) services, but also in complex logistics center operations that combine these two types of operations.

We handle general household goods (manufacturer and wholesaler), bicycle goods (retail), sporting goods (retail), camping goods, pet goods, etc.



Industrial Goods

We provide DC (inventory type) services for Japanese automobile manufacturers and for consumer electronics manufacturers.

We handle industrial plastic fasteners, automotive plastic parts, and more.

We use measuring equipment to perform fractional packing work and individual packaging work for dealers.



Character Goods and Clothing

We provide BtoB/BtoC integrated DC (inventory type) services.

We handle character goods, goods for professional baseball teams, goods for J-League teams, apparel, outdoor sporting goods, etc.

We provide distribution processing services such as price tagging, gift wrapping, and the creation of preserved flower arrangements.

Operation Center

Niigata Nakajo, Niigata Murakami, Sagamihara, Sagamihara Ogura, Atsugi, Kobe, Okayama Hayashima, Okayama Akaiwa

Medical Logistics

Providing nationwide delivery services for pharmaceuticals and medical devices

A one-stop logistics service compliant with laws on pharmaceuticals and medical equipment

Our highest priority is the quality and stable supply of products. We will continue to improve safety, security, and stable distribution to meet the various needs of our customers.

We have air-conditioned and temperature-controlled warehouses, cold storage facilities, and hazardous materials warehouses, and can manage expiration dates in addition to production lots.

With over 20 years of experience in pharmaceutical distribution and a track record in operating joint centers for pharmaceutical manufacturers, we are committed to good distribution based on SOPs that comply with GMP ISO9001 PMS.

Moreover, we have obtained business licenses for various types of processes (packaging, labeling, storage).

We support various types of distribution processing (industrial operations) that require business licenses, and we support distribution processing sales promotion and parts of the production process based on GMP management standards.



Operation Center

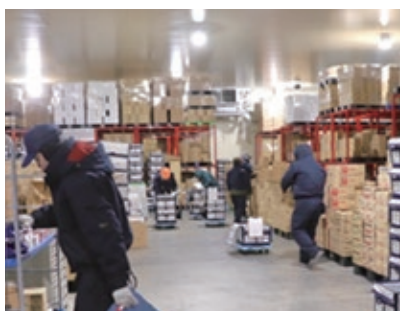
Sapporo No. 1, Kita-Kanto Itakura, Tsukuba, Ageo, Kawaguchi,
Daito, Hirakata, Fukuoka, Tatebayashi, Meiwa



Food Logistics

**From incoming shipment and storage to delivery,
we offer our services 24 hours a day, 365 days a year.
We cater to major mass merchandisers and convenience stores.**

We strive to establish a low-cost logistics systems by working with shippers for all food products shipped from food factories, production areas, and markets, until the products arrive at supermarkets and convenience stores. We will continue to provide better proposals, development, and management services for any kind of food distribution operation, a business that will continue to grow more diverse in the years to come.



TC (Transport Type)

The goods are immediately sorted and delivered to their destinations on time and on schedule.

Temperature Range -25°C to +25°C



DC (Inventory Type)

We store goods temporarily and ship them according to orders.

Temperature Range -25°C to +25°C



Distribution Processing

We store goods and ship them from our inventory according to orders.

Temperature Range -25°C to +25°C

Operation Center

Sendai, Nagareyama, Kasukabe, Satte, Sagamihara Ogura, Chiba Honda